

George

Objekt-Nr. 020151

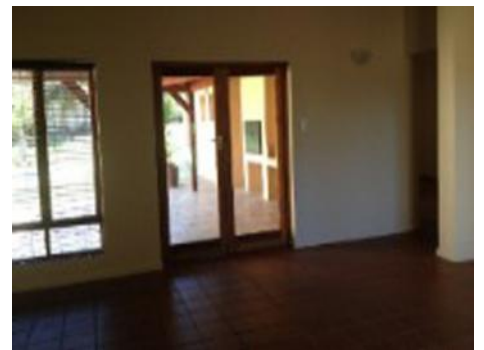
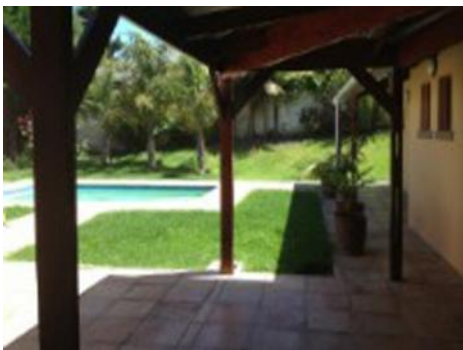


Spacious property with braai area and swimming pool in the suburb of Heather Park

Konstruktionsfläche: 375 m²
Grundstück: 1.359 m²
Schlafzimmer: 4
Badezimmer: 3
Meerblick: -

Energiezertifikat: in Arbeit

Preis: \$ 269.401,-



George

Objekt-Nr. 020151



Objektbeschreibung:

This charming house of approximately 375 m² is situated in the suburb of Heather Park, area of George, South Africa. The total area of the property is about 1359 m².

This beautiful house has 4 bedrooms and 3 comfortable bathrooms. In the lounge you can find fireplace, where you can enjoy your rest after the long working day. In the open patio, there is nice BBQ area with swimming pool to enjoy week-ends with family and friends. 2 study nooks are available in the house.

Other advantages of this property are the outside toilets but also a double garage.

George

Objekt-Nr. 020151

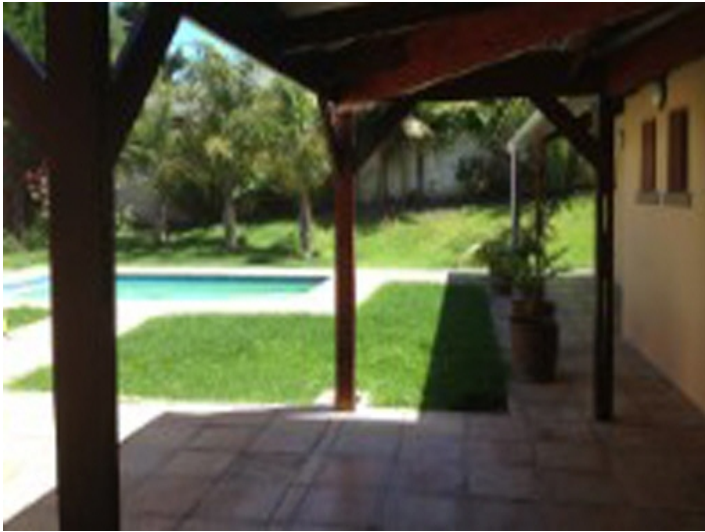


Lage & Umgebung:

George is situated about 430 km from Cape Town. With about 213,757 inhabitants, the town is one of the largest of Western Cape's.

Only a few kilometers from the Indian Ocean, George spreads out on a plateau on the southern edge of the Outeniqua Mountains.

George
Objekt-Nr. 020151



View to the pool area



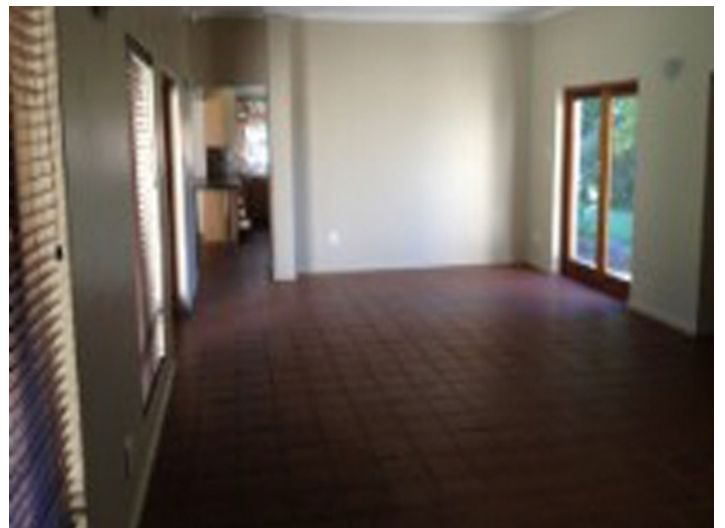
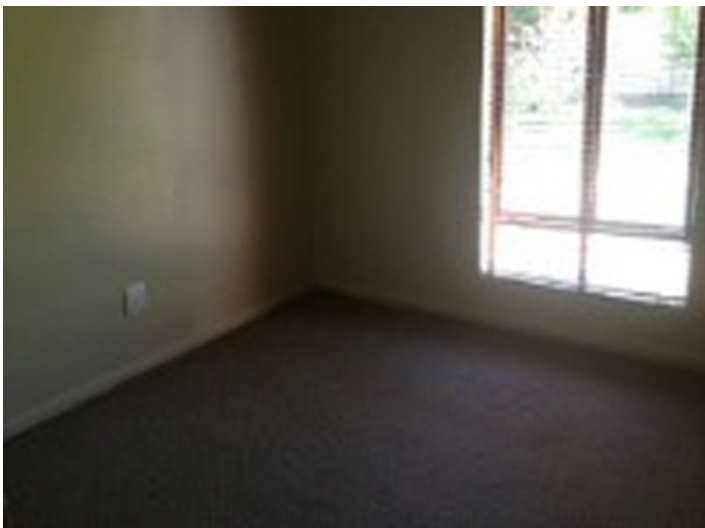
Outside covered braai area



Huge living area



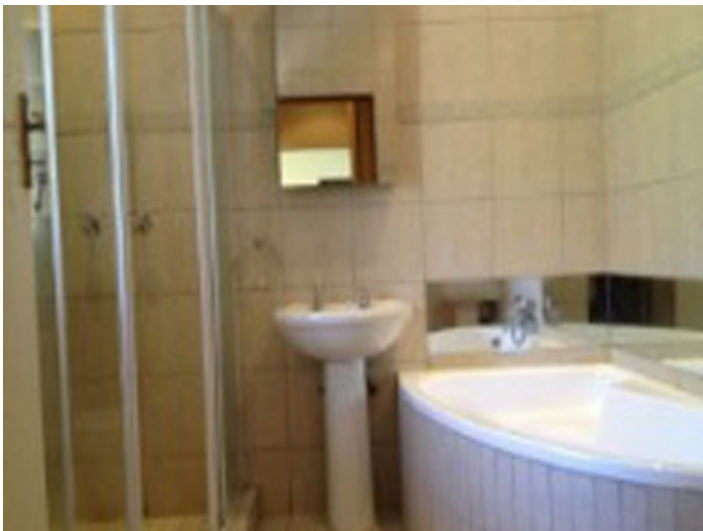
Another view of the living area



Alle Angaben nach bestem Wissen. Irrtum und Zwischenverkauf vorbehalten. Dieses Exposé ist eine Vorinformation, als Rechtsgrundlage gilt allein der notariell abgeschlossene Kaufvertrag.

George

Objekt-Nr. 020151



Alle Angaben nach bestem Wissen. Irrtum und Zwischenverkauf vorbehalten. Dieses Exposé ist eine Vorinformation, als Rechtsgrundlage gilt allein der notariell abgeschlossene Kaufvertrag.

PORTA MONDIAL • C./ COLOM 20, 1º, E-07001 PALMA DE MALLORCA
TEL. +34 971 720 164 • INFO@PORTAMONDIAL-SOUTHAFRICA.COM