

Südafrika
Objekt-Nr. 020108



Property with nice house for young family or couple in retirement looking for restful and peaceful life

Konstruktionsfläche:	-	Energiezertifikat:	in Arbeit
Schlafzimmer:	3		
Badezimmer:	3		
Meerblick:	-		

Preis: \$ 264.092,-



Südafrika

Objekt-Nr. 020108



Objektbeschreibung:

This nice and comfortable cottage is offering beautiful views to the mountains in South Africa, suburb of Greyton. The property could be a family home for young couple or retired people looking for rest and calm life.

On the first floor you have a spacious kitchen with scullery near the kitchen area. Here, you can also find the main bedroom with its own kitchenette and a lounge. On the second floor you have 2 other bedrooms and a bathroom with a toilet.

Other advantages of this property are the garage, nice garden with oaks and braai, but also a separate storeroom and nice stream runs through the property available.

Südafrika

Objekt-Nr. 020108



Lage & Umgebung:

Greyton is a small town situated in the area of Overberg, in South Africa.

Thanks to its natural beauty and the combination of both modernity and old-world charm, today the town is a holiday and week-end destination for visitor from all over the world. You can enjoy your week-end and practice different activities, for example take a walk near Sonderend River or spend time on the Greyton market place.

Südafrika

Objekt-Nr. 020108



Beautiful views to the mountains



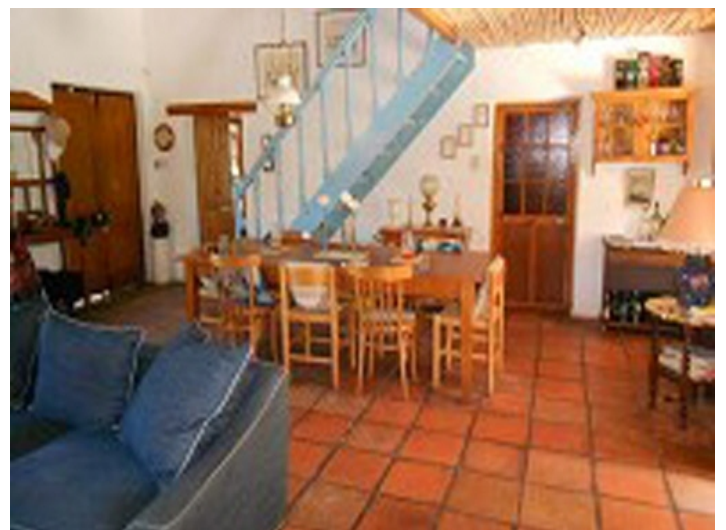
Entrance and garage view



Nice terrace in the property



Sunny garden with oak tree and braai

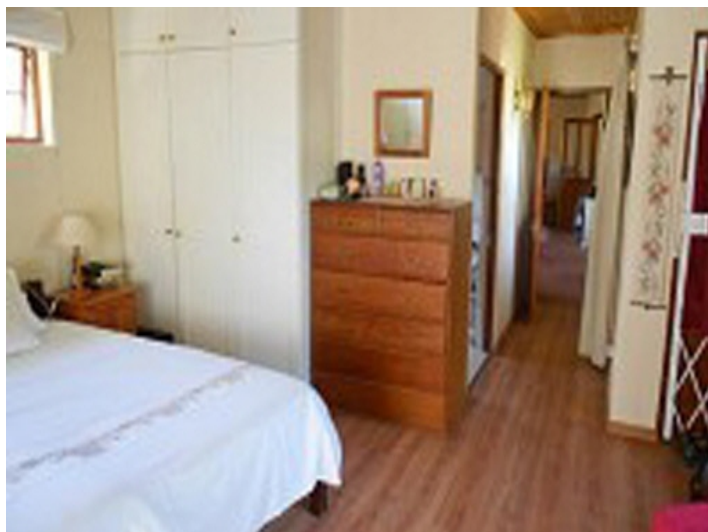


Alle Angaben nach bestem Wissen. Irrtum und Zwischenverkauf vorbehalten. Dieses Exposé ist eine Vorinformation, als Rechtsgrundlage gilt allein der notariell abgeschlossene Kaufvertrag.

PORTA MONDIAL • C./ COLOM 20, 1º, E-07001 PALMA DE MALLORCA
TEL. +34 971 720 164 • INFO@PORTAMONDIAL-SOUTHAFRICA.COM

Südafrika

Objekt-Nr. 020108



Alle Angaben nach bestem Wissen. Irrtum und Zwischenverkauf vorbehalten. Dieses Exposé ist eine Vorinformation, als Rechtsgrundlage gilt allein der notariell abgeschlossene Kaufvertrag.

PORTA MONDIAL • C./ COLOM 20, 1º, E-07001 PALMA DE MALLORCA
TEL. +34 971 720 164 • INFO@PORTAMONDIAL-SOUTHAFRICA.COM